

# MTN Products



Horizons® 3Gg

## Horizons® 3Gg Filter Installation Guide



## General Information

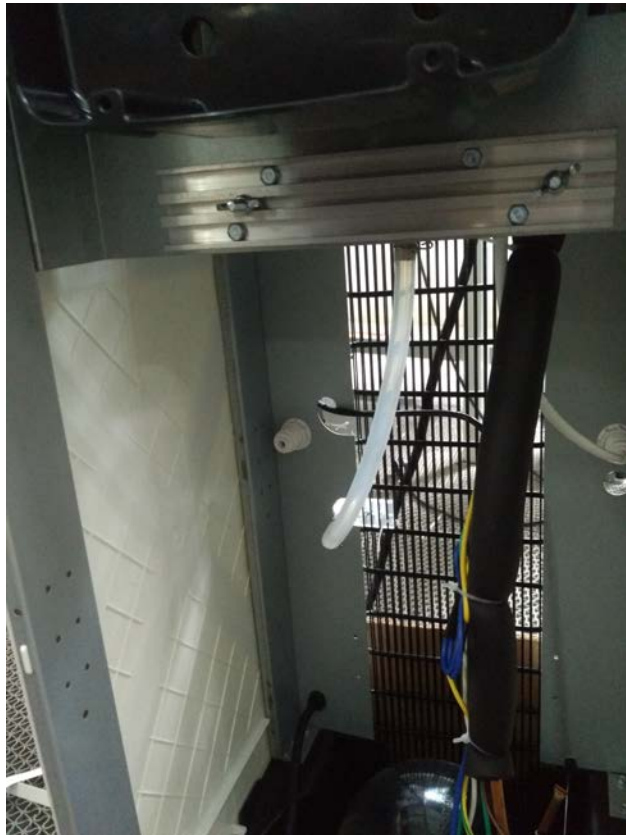
**Note:** Ensure installation complies with all State and Local Plumbing Codes.

**WARNING:** Should it become necessary to gain access to the electrical components, disconnect electrical power and shut water off prior to removing the panels.

- This filtration unit (POU) should only be connected to a potable water source.
- This unit is to be used indoors only.
- Do not locate unit in direct sunlight or next to a heat source. Always maintain at least 4 inches of clearance around the cooler for proper air circulation.
- Do not install cooler in area that may freeze.
- Cooler should be installed within 6 feet of a power source. **Never use extension cords.**
- This device should only be connected to a power source after installation to a waterline.

## Filter Setup Procedures

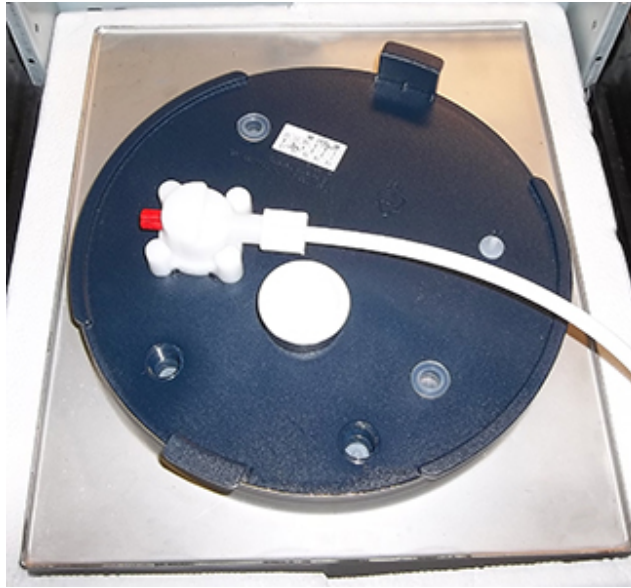
- Locate the cold water supply line and install suitable access valve with a ¼" outlet with a shutoff. Connect the ¼" waterline to the access valve. Tag the shutoff valve.
- To maintain the warranty, the inline pressure regulator MUST be installed.
- To remove the drip tray, simply pull out.
- Remove the two Phillip head screws and open the front compartment.



The Horizons® 3Gg is equipped with a universal mounting bracket that will accommodate numerous widths of filter heads.

- Connect waterline to inlet fitting on filter head. The float assembly on the Horizons® 3Gg has a ¼" LLDPE tubing already attached to the float mechanism. To access the float lid, the rear panel needs to be removed.

- Insert the tube below into the outlet side of the filter head.



- Slowly open the access water valve and allow the cold reservoir to fill. Check for leaks while the cold reservoir fills.
- Connect power cord to a three-pronged outlet. Never break off the grounding prong on the power cord.

**Note: Effective June 15, 2012: UL recommends that this unit should be used with a ground fault circuit interrupting type (GFCI) electrical outlet.**

- Place a container under the dispense nozzle and press the cold water button and then the dispense button. Hold it until a steady stream of water is dispensed from the nozzle.
- Press the hot unlock button and hold for 3 seconds, then press the hot dispense button and hold until a steady stream of water is dispensed.
- Place the hot tank switch, located on the rear of the cooler, in the “ON” position.

**Note: The Switch is designed to remain lit until the hot tank reaches proper operating temperature.**